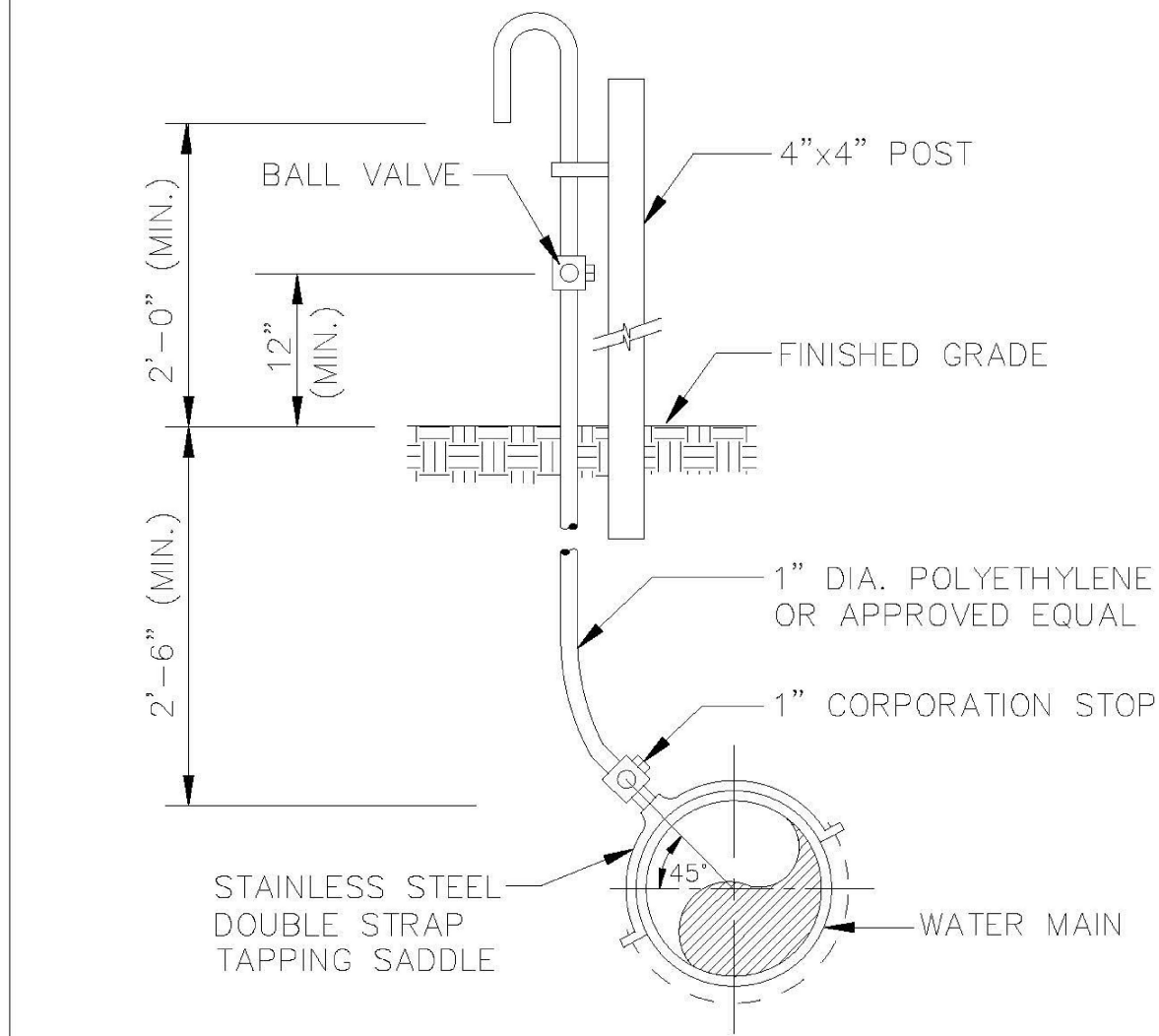


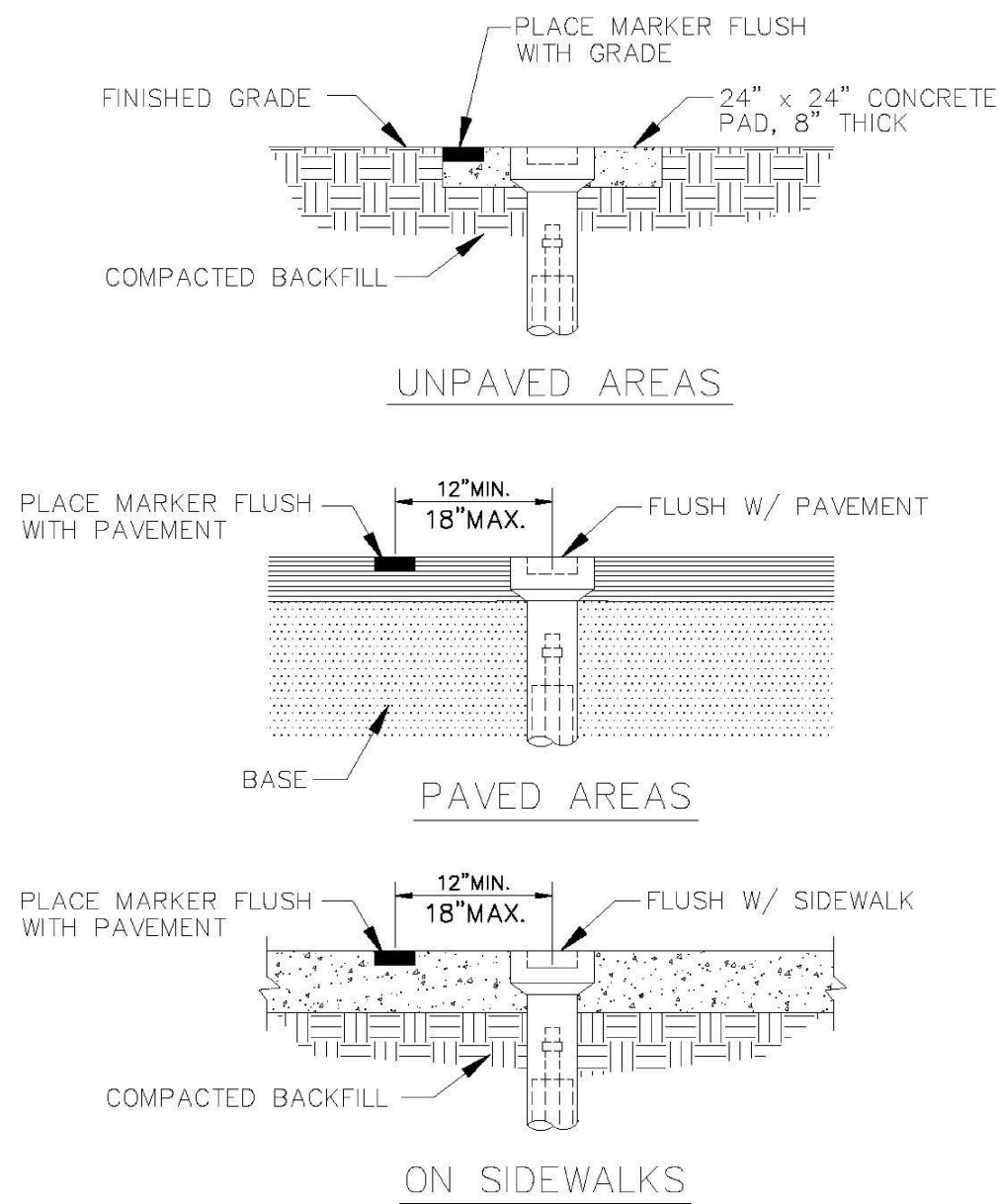
\\ctarfil02\Eng\Projects\2024\24-0055 WSD.dwg [C-8] Feb 28, 2025 3:46pm CEDWARDS



SAMPLE POINT (MAIN)

ALL D.I.P. TO BE PAINTED
BLUE ON TOP HALF OF PIPE.

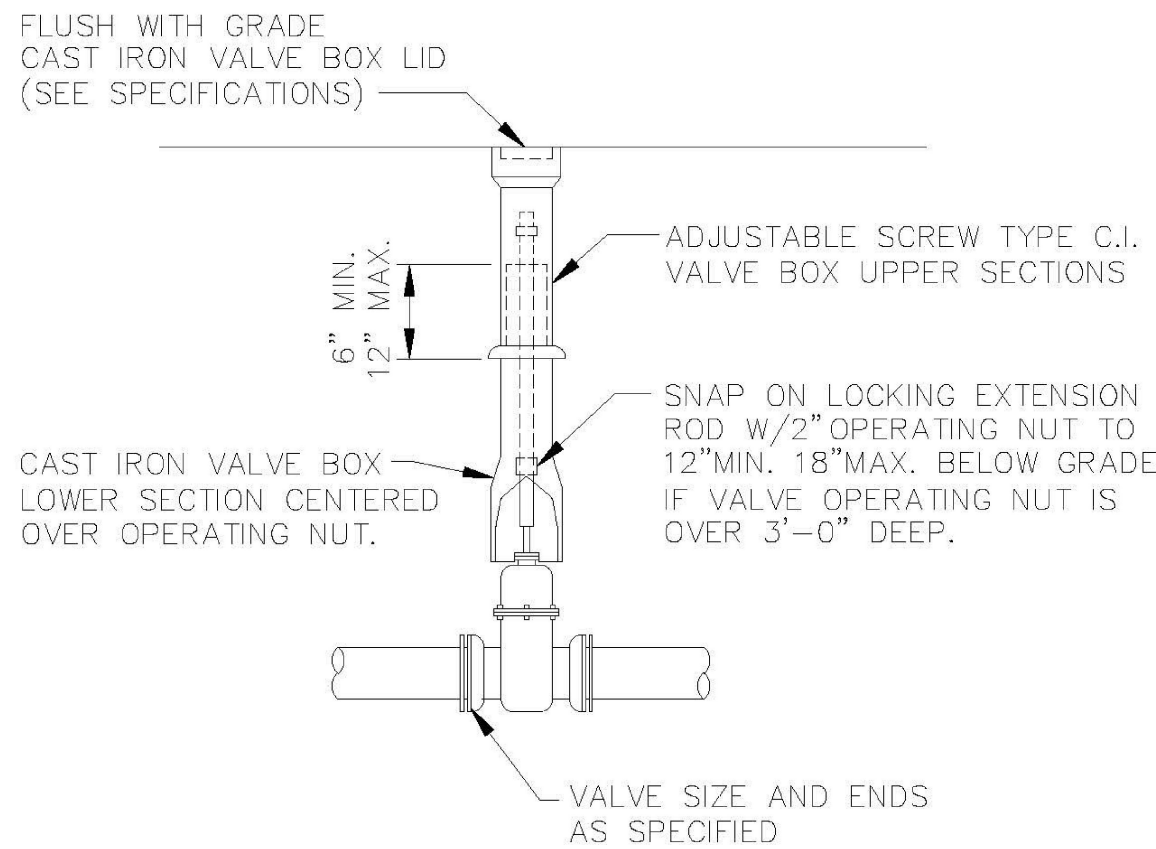
ENGINEERING STANDARDS 2022		
REVISIONS	ENGINEERING DIVISION	SAMPLE POINT (MAIN)
BY DATE	CITY OF POMPAÑO BEACH	
S.S. 04-2005		
	SCALE: N.T.S.	DATE: MAY 2022 DWG. NO. 100-1



VALVE BOX SETTINGS

ENGINEERING STANDARDS 2022

REVISIONS	ENGINEERING DIVISION	VALVE BOX SETTINGS
BY DATE	CITY OF POMPAÑO BEACH	
S.S. 04-2005		
T.W. 11-2007		
	SCALE: N.T.S.	DATE: MAY 2022 DWG. NO. 102-1

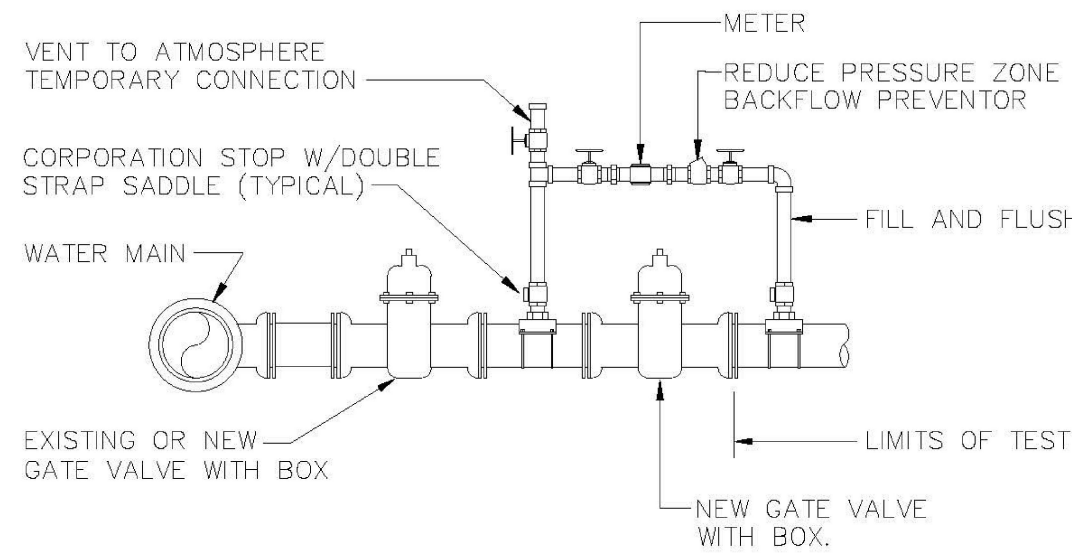


GATE OR PLUG VALVE SETTING

USE MEGALUGS AT ALL PIPE JOINTS

ALL D.I.P. TO BE PAINTED
BLUE ON TOP HALF OF PIPE.

ENGINEERING STANDARDS 2022		
REVISIONS	ENGINEERING DIVISION	GATE OR PLUG VALVE SETTINGS
BY DATE	CITY OF POMPAÑO BEACH	
S.S. 04-2005		
T.W. 11-2007		
	SCALE: N.T.S.	DATE: MAY 2022 DWG. NO. 103-1



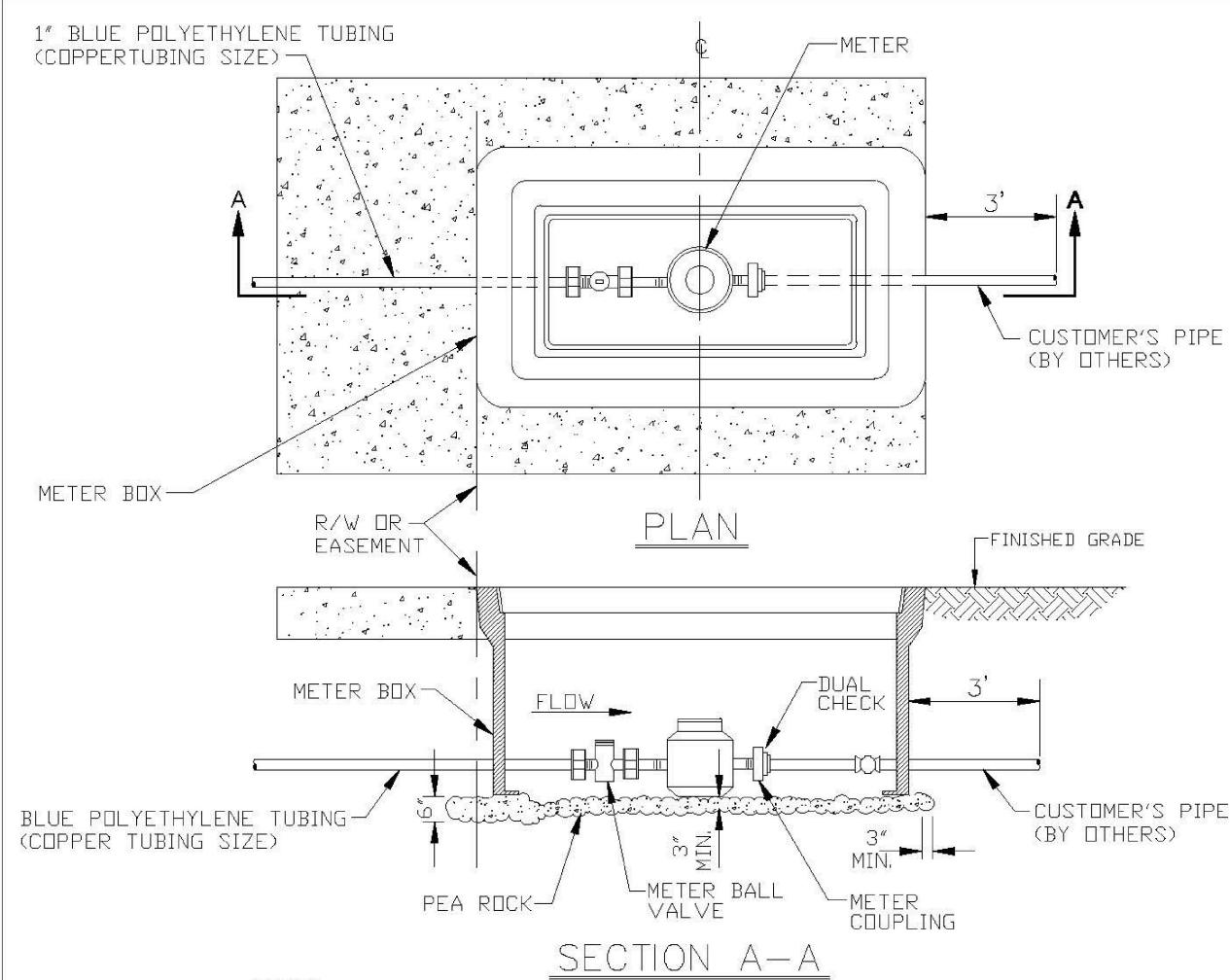
NOTES:

1. WATER MAIN TO BE PRESSURE TESTED AND DISINFECTED ACCORDING TO BROWARD COUNTY PUBLIC HEALTH UNIT REGULATIONS, ANWA, AND MUNICIPAL SPECIFICATIONS IN EFFECT.
2. BACTERIOLOGICAL TESTS ARE TO BE PERFORMED BY THE CONTRACTOR AND AN APPROVED TESTING LABORATORY.
3. REMOVE TEMPORARY CONNECTION AT SADDLE ON NEW MAINS AFTER FILLING AND FLUSHING HAS BEEN COMPLETED AND REPLACE WITH BRASS PLUG.
4. PROVIDE ALL NECESSARY THRUST BLOCKS OR OTHER RESTRAINTS.
5. FILLING AND FLUSHING LOCATIONS SHALL BE COORDINATED BY THE CONTRACTOR, ENGINEER, AND CITY.
6. VENT TO ATMOSPHERE SHALL REMAIN OPEN DURING ALL PHASES OF PRESSURE TESTING.
7. AFTER COMPLETION FILL AND FLUSH CONNECTION
8. USE MEGALUGS AT ALL PIPE JOINTS

FILLING AND FLUSHING CONNECTION

ALL D.I.P. TO BE PAINTED
BLUE ON TOP HALF OF PIPE.

ENGINEERING STANDARDS 2022		
REVISIONS	ENGINEERING DIVISION	FILLING / FLUSHING CONNECTION
BY DATE	CITY OF POMPAÑO BEACH	
S.S. 04-2005		
T.W. 11-2007		
S.S. 01-2012		
	SCALE: N.T.S.	DATE: MAY 2022 DWG. NO. 104-1



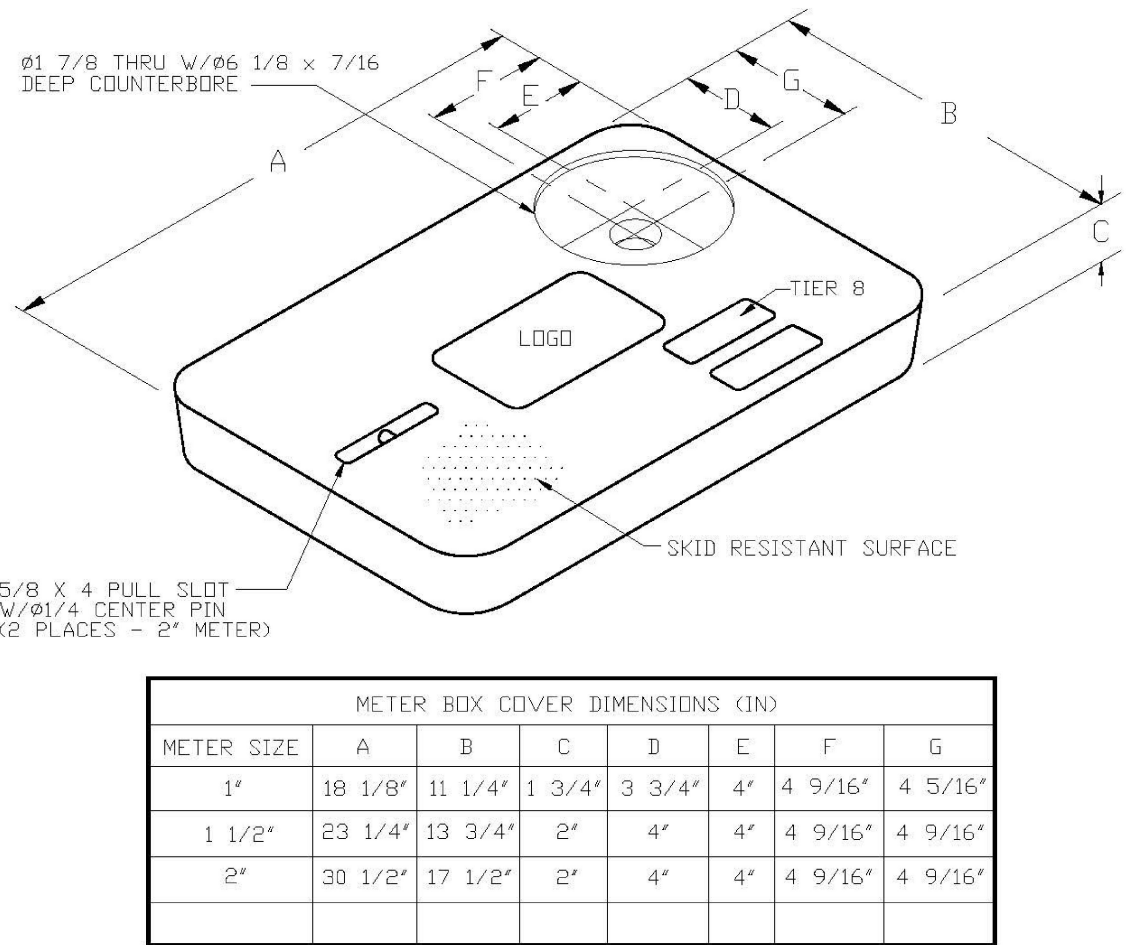
NOTES:

1. ALL METERS WILL BE SUPPLIED AND INSTALLED BY CPD UTILITIES. METER HAS IRON PIPE THREAD MALE CONNECTION ON EACH END.
2. METER SHALL BE CENTERED IN BOX.
3. DUAL CHECK IS SAME SIZE AS CUSTOMER'S SERVICE LINE.

METER SIZE	LAYING LENGTH (IN)	HEIGHT (IN)
3/4"	7.5	4.56
1"	10.75	5.75

METER BOX INSTALLATION

ENGINEERING STANDARDS 2022		
REVISIONS	ENGINEERING DIVISION	METER BOX INSTALLATION FOR 5/8" AND 1" METERS
BY DATE	CITY OF POMPAÑO BEACH	
S.S. 11-2012		
	SCALE: N.T.S.	DATE: JAN. 2022 DWG. NO. 105-2



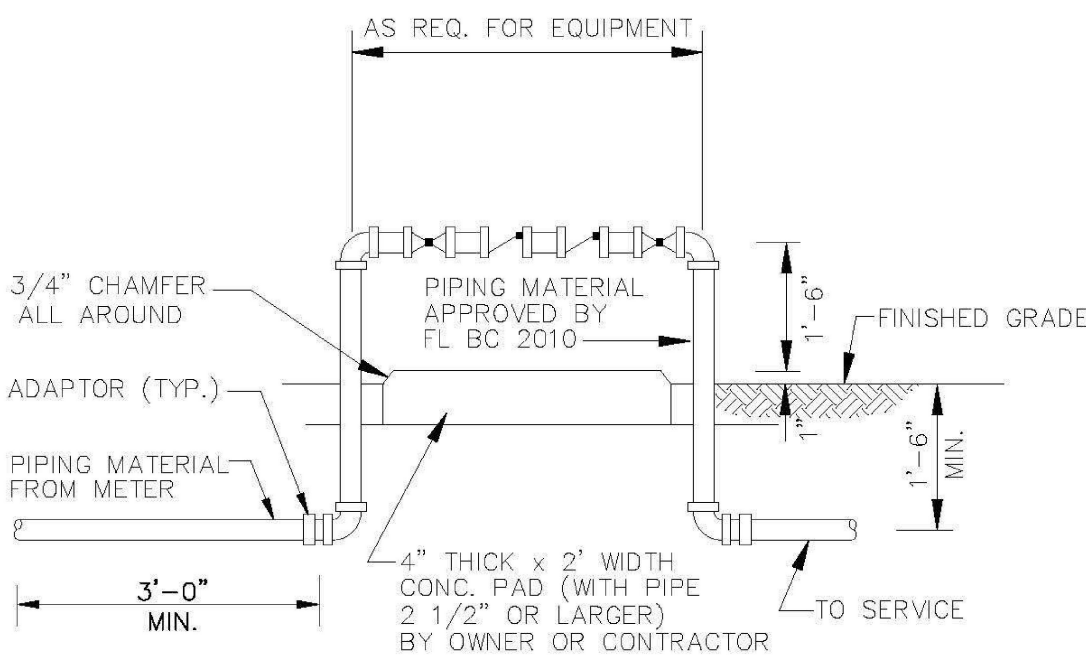
METER BOX COVER DIMENSIONS (IN)							
METER SIZE	A	B	C	D	E	F	G
1"	18 1/8"	11 1/4"	1 3/4"	3 3/4"	4"	4 9/16"	4 5/16"
1 1/2"	23 1/4"	13 3/4"	2"	4"	4"	4 9/16"	4 9/16"
2"	30 1/2"	17 1/2"	2"	4"	4"	4 9/16"	4 9/16"

NOTES:

1. CUSTOMER IS CITY OF POMPAÑO BEACH FLORIDA. LOGO TO BE SPECIFIED: CITY OF POMPAÑO BEACH POTABLE WATER
2. FITS NEPTUNE R450 ANTENNA
3. THIS COVER IS RATED FOR A STATIC DESIGN LOAD OF 8,000 LBS. (35,548 N) COVER A 10 (254) X 10 (254) AREA AND MUST PASS A MINIMUM STATIC TEST LOAD OF 12,000 LBS (53,378 N)
4. METER BOX COVER SHOULD BE RATED FOR TRAFFIC CONDITION AS DETERMINED BE ENGINEER OF RECORD.

POTABLE WATER METER BOX COVER

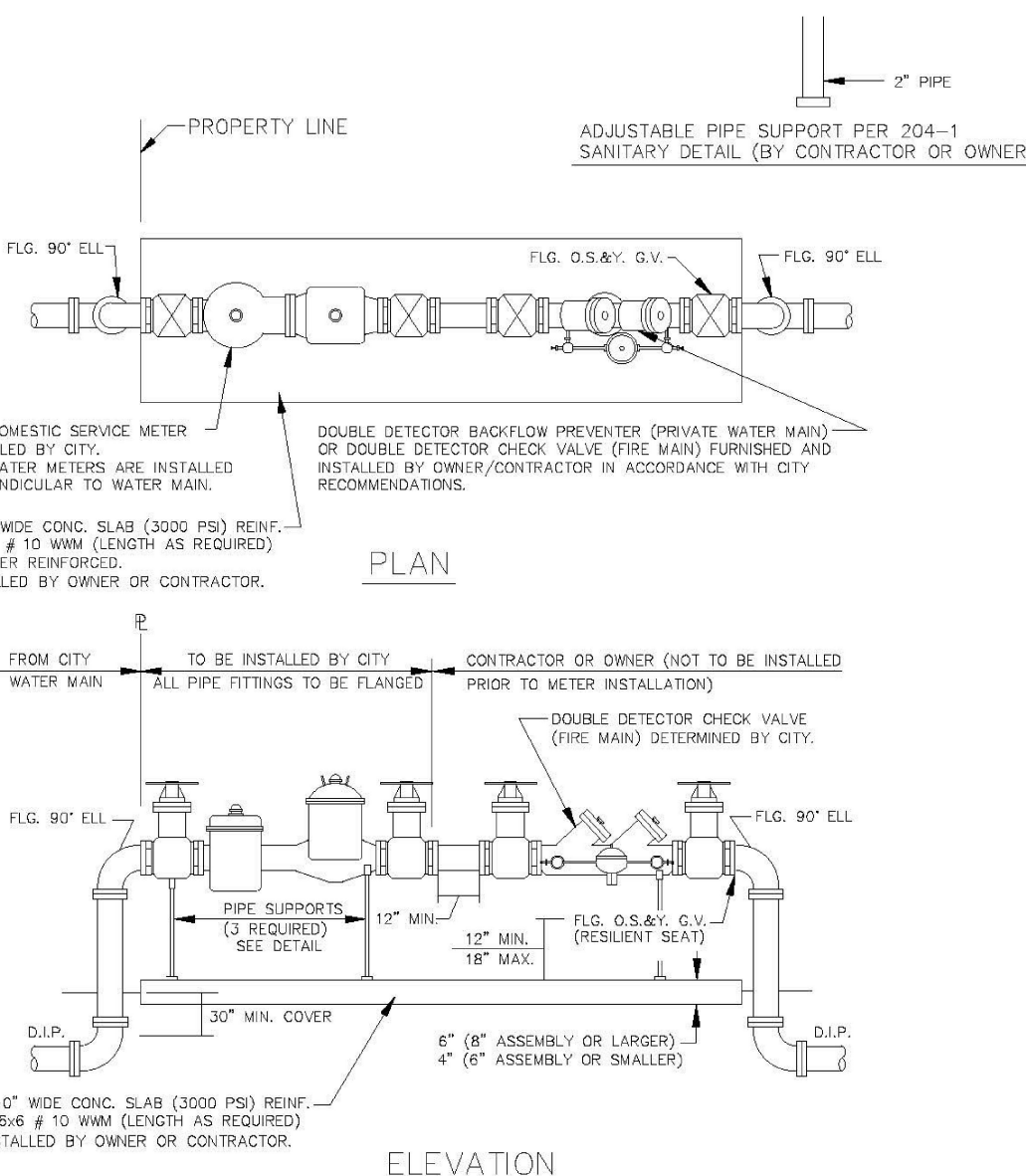
ENGINEERING STANDARDS 2022		
REVISIONS	ENGINEERING DIVISION	TYPICAL METER BOX COVER
BY DATE	CITY OF POMPAÑO BEACH	
S.S. 11-2012		
	SCALE: N.T.S.	DATE: JAN. 2022 DWG. NO. 105-3



BACKFLOW PREVENTER

USE MEGALUGS AT ALL PIPE JOINTS 3" AND LARGER
PLEASE SEE METER INSTALL DIMENSION LIST ON STANDARD NO. 106-4
SMALL UNITS UNI-STRUT SUPPORT

ENGINEERING STANDARDS 2022		
REVISIONS	ENGINEERING DIVISION	BACKFLOW PREVENTER
BY DATE	CITY OF POMPAÑO BEACH	
S.S. 04-2008		
S.S. 03-2009		
S.S. 11-2012		
S.S. 01-2013		
	SCALE: N.T.S.	DATE: MAY 2022 DWG. NO. 106-1



NOTES:

1. THE BACKFLOW PREVENTOR FOR THE BY-PASS SHALL BE DDCV OR RPZ.
2. PLEASE NOTE THAT WATER METERS 3" AND LARGER ARE SUBJECT TO AN APPROXIMATE ORDER LEAD TIME OF 60 TO 75 DAYS AFTER FULL PAYMENT, PLEASE CONTACT CUSTOMER SERVICE AT 954-786-4637 TO ARRANGE FOR METER PROCUREMENT AND INSTALLATION.
3. USE MEGALUGS AT ALL PIPE JOINTS
4. PLEASE SEE METER INSTALL DIMENSION LIST ON STANDARD NO. 106-4

ENGINEERING STANDARDS 2022		
REVISIONS	ENGINEERING DIVISION	FIRE ONLY METER AND BACKFLOW DEVICE
BY DATE	CITY OF POMPAÑO BEACH	
S.S. 05-2011		
S.S. 11-2012		
S.S. 12-2013		
S.S. 11-2016		
	SCALE: N.T.S.	DATE: MAY 2022 DWG. NO. 106-3

1501 WEST ATLANTIC BLVD.
POMPAÑO BEACH, FLORIDA
PREPARED FOR:
KAJA PROPERTIES INC.
WATER AND SEWER DETAILS

CRAVEN - THOMPSON AND ASSOCIATES, INC.
ENGINEERS • PLANNERS • SURVEYORS
35653 N.W. 53RD STREET, FORT LAUDERDALE, FLORIDA 33309
FAX: (954) 739-6409 TEL: (954) 739-6400
FLORIDA LICENSED ENGINEERS, SURVEYORS & MAPS BUSINESS NO. 271
FLORIDA LICENSED LANDSCAPE ARCHITECTURE BUSINESS NO. C00014
MATERIAL SHOWN HEREIN IS THE PROPERTY OF CRAVEN THOMPSON & ASSOCIATES, INC. AND SHALL NOT BE REPRODUCED OR IN PART WITHOUT WRITTEN PERMISSION OF CRAVEN THOMPSON & ASSOCIATES, INC. COPYRIGHT © 2015

DATE	SCALE	DESIGN BY	DRAWN BY	CHECKED BY	APPROVED BY
02/25/25	AS SHOWN	CEE	TR	CEE	CEE

CHAD E. EDWARDS, P.E.
FLORIDA LICENSE No. 59306
2025-02-28
PROJECT NO.
24-0055-001-01
C-8
SHEET 8 OF 12

This document has been digitally signed and sealed by Chad Everett Edwards, P.E. on the date indicated here. Printed copies of this document are not considered signed and sealed and the signature must be verified on any electronic copies.

04.02.2025